



# ROCKVILLE CHAPTER NEWSLETTER

P.O. Box 2255  
Germantown, MD 20875

June 2021

T. Anderson, Editor



## President's Message

When we were in the depth of the pandemic, the Chapter was a quiet place to visit and get away from the ZOOM meetings, virtual school, or just get out of the house besides going to the grocery store. It was a safe space where you could be outside and easily social distance at the ranges, lake, or walk the grounds.

Now, there's a buzz of excitement and it's not just the bees at the apiary collecting pollen. Everything is opening. We can now see smiles, shake hands or even hug one another. I was there on Saturday and was surprised to see so many cars in the parking lot. It's been quite a while since I've seen that. There was a Cub Scout activity going on, Range Officer Training, and other members just out and about the grounds. June will be busy with Summer Archery, Water Sports, the new Drone Flying program, as well as the continuation of the Muzzleloader League, Rifle League, and Pistol League.

Although the June GM meeting will still be a virtual meeting, we will be transitioning to in-person/virtual in July. Details will be sent out later in the month and I hope you'll be able to join us then.

Susan Cassell

## Natural Resources Career Camp Attendee

This year we sponsored Silvia Brown. She lives in Gaithersburg and will be attending Northwest High School.

Silvia loves nature and everything about it. She has gone to outdoor Girl Scout Summer camps for 5 years and counting. She is in a magnet school for Aerospace that challenged her to make a place to live on other planets and moons which has taught her how important our resources are and how important it is to conserve them. Silvia sees how pollutants and invasive species have affected Maryland parks and wants to help restore it. She wants to attend the camp because this will be a great opportunity to go into nature and learn about what people do in this field of work. She has always been interested in nature and recently thought of being an environmentalist or an environmental scientist.

Silvia thinks the activities in this camp sound like fun and are things she wants to learn more about especially going in the creeks and climbing trees.

## June Speaker Focus

For the June 4 General Membership Meeting, Sam Droege, of the USGS Patuxent Wildlife Research Center to be our guest speaker for the evening. Sam is a Wildlife Biologist and hunts wild bee species in the state of Maryland as part of his position in managing the USGS BMIL – Bee Management and Inventory Laboratory. These are NOT HONEY BEES! But you will find his presentation to be totally fascinating.



Sam has spent most of his career at the USGS Patuxent Wildlife Research Center. He has coordinated the North American Breeding Bird Survey Program, developed the North American Amphibian Monitoring Program, the BioBlitz, Cricket Crawl, and FrogwatchUSA programs and worked on the design and evaluation of monitoring programs. Currently he is developing an inventory and monitoring program for native bees, online identification guides for North American bees at [www.discoverlife.org](http://www.discoverlife.org), and with Jessica Zelt reviving the North American Bird Phenology Program. His group maintains high resolution photographs of insects and other macro natural history objects at:

<http://www.flickr.com/photos/usgsbiml/>

## Important Reminders

Introductory kayak class, rain or shine, on June 5 from 8:45 AM to 3 PM at our Chapter House and lake. To register, send an email with the number of adults and children to [watersports@iwl.org](mailto:watersports@iwl.org).

Volunteers are needed to help at the Chapter booth at the Montgomery County Fair August 13-21. Contact Bill Leaman at 240-888-7600 with questions or to volunteer.

## Ideas to Get your Volunteer Hours

It's that time of year when the grasses are growing. Below are some great opportunities to get in your volunteer hours!

The Forest Stewardship Team is looking for volunteers to adopt sections of the trails and a few other areas too. Frank Markus is our Chapter's Master Mower, but not all areas are easily accessible with the tractor.

Here are a few sites along the trails and bridges that need routine trimming over the summer:

Along The Bridge that crosses Great Seneca Creek - We cut back the rose and bittersweet a month or so ago, but need to keep it from taking over again.

Creek access paths near The Bridge. Especially by the fall Fly Fishing 101 course.

The trail section between The Bridge and the woods, along the mill race.

The trail section that crosses the Frog Pond and leads up to the bluffs and a path from the trail to the a nice bench - You can sit and rest when you are done with a great view of the creek!

The sides of the wide section of trail at the back of the orchard meadow (the one nearer to the railroad tracks) where the woods are open. We continue to try to establish trees along this area but the soil is very shallow. Invasive rose and stilt grass need controlling.

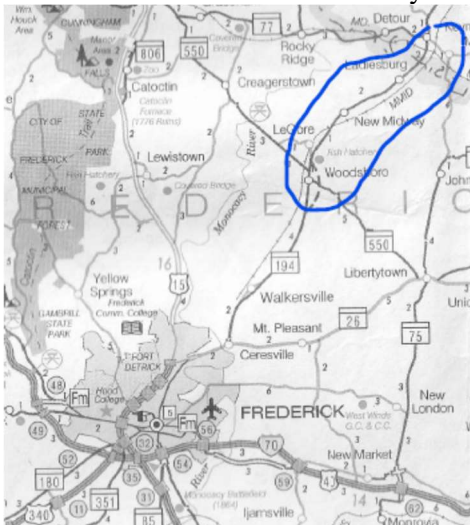
Areas between connecting the wide area mentioned above and the bluff. - Occasional trimming needed

If you'd like to adopt one of these areas or even just take a turn, contact me at famstevens@gmail.com. I can help you locate it and I'd like to be able to thank you for your help. I have a battery powered weed whacker I can loan out. I've found the batteries last about as long as I do.

~Cindy Stevens~

## Get your Kayak!

Our first Watersports event of the year will take place on June 19 when we traverse the Monocacy.



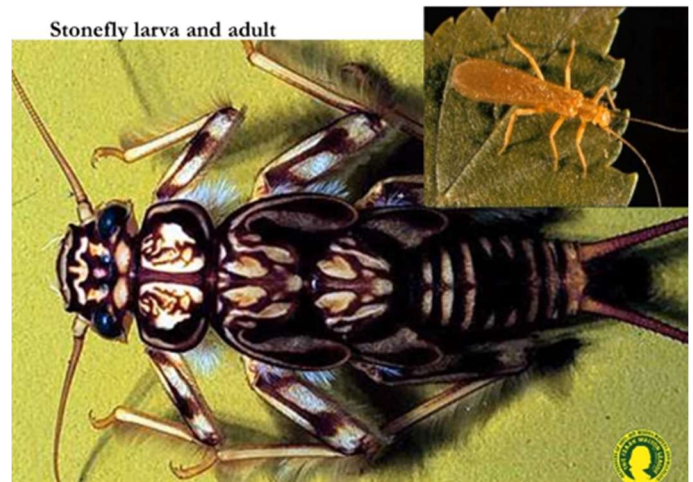
For important details for this and future events, see <https://www.iwlar.org/wp-content/uploads/Watersports-Schedule.pdf>.

## Clean Water Corner

The first goal stated in the [IWLA Strategic Plan 2019-2023](#) is to “connect more young people to conservation and outdoor recreation.” At the May 21 Board of Directors meeting, one of the Pack 464 leaders shared how much the boys enjoy fishing at the lake!

During the open house on National Hunting and Fishing Day many Chapter volunteers work to provide many youth with an opportunity to bait a hook and catch a fish. In order for there to be healthy fish in the lake and nearby stream, there needs to be healthy food for the fish. Our area is fortunate to have many small cold-water spring-fed streams. Two of these are flowing into our lake, and another passes the rifle range and flows down to the old mill race. The cold water holds more oxygen than warmer water and the insect life in these streams is robust.

We welcomed **Phillip Mariscal**, our new SOS chair in training, with a quick sampling on one of these feeder streams in May. Though we often see the sensitive mayfly larvae when we sample Great Seneca Creek, we were excited to see that stonefly larvae were abundant and active in the feeder stream.



**Please mark your calendars for Sunday June 27 and join us for a stream sampling event that promises to be fun for the family.** We'll take a seine net into the creek to collect a sample of insects then spread out into small groups to identify them back on land. Check your email in early June for a Sign-up Genius notice.

## Presentation on Sugarloaf mountain

Interested in learning more about one of our local treasures? Take off your hiking boots and rest your feet while enjoying a June 11 virtual presentation by Ralph Buglass about the history of Sugarloaf Mountain. For more info, see <https://mcpl.libnet.info/event/5137623>

### **New Supplemental Range Rules**

#### *Open Hours Rifle and Pistol Ranges Operation (When Duty Range Officers are Assigned)*

- Maximum of 8 pistol range positions in use
- Duty Range Officers may assign persons to position 8 per their request for increased distance between shooters
- Maximum of 2 shooting positions in use at the rifle range with 6 ft. distancing (e.g., positions 1 and 3 used simultaneously)
- Duty Range Officers may sign people in the logbooks to minimize contact
- All persons shall wear masks when unable to maintain 6 ft. distances between persons
- Mask use is optional while engaged in shooting

#### *Other Hours Rifle and Pistol Ranges Operation (Applicable to Range Officer Qualified Members)*

- Maximum of 8 pistol range positions in use
- Maximum of 2 shooting positions in use at the rifle range with 6 ft. distancing (e.g., positions 1 and 3 used simultaneously)
- All persons shall wear masks when unable to maintain 6 ft. distances between persons
- Mask use is optional while engaged in shooting

#### *Archery Range Operation*

- All persons shall wear masks when unable to maintain 6 ft. distances between persons
- Archers shall remove their masks while shooting and secure them away from bow strings and cables (they cannot be put on the wrist)

### **Virtual Air Pistol League**

The Virtual Air Pistol League will be starting up again this summer. It will start on June 1<sup>st</sup> and run for 15 weeks. Participants shoot weekly, at home, using their own targets (or print out a PDF provided), then email me their scores and/or pictures of the targets. I will send out weekly results. Awards will be printable certificates. There are no fees to participate. If you are interested, email [scassell@prodigy.net](mailto:scassell@prodigy.net).

### **New Members Recently Inducted**

Ilene Altman	N. Potomac
Shawn Buss	Damascus
Dean Cary	Germantown
Joe Devlin	Rockville
Joel Kieper	Germantown
Jason Seifert	Potomac
Rowdy Settles	Rockville

A warm welcome to all!

### **Ike's Want Ads**

Rifle scope. Simmons Pro Hunter. 3-9 x 44, coated optics. Condition new, never used. \$ 50 00.  
Approx. 200 rounds of .22 LR. \$20 or best offer. For more info, contact Rolf Tschudin at [grietzzi@verizon.net](mailto:grietzzi@verizon.net)

**To Place a non-commercial ad**, write to the Chapter's PO Box, or contact Todd Anderson at 443-766-0433 or at [Tander5526@hotmail.com](mailto:Tander5526@hotmail.com). Ads must be submitted by third Friday of the month.